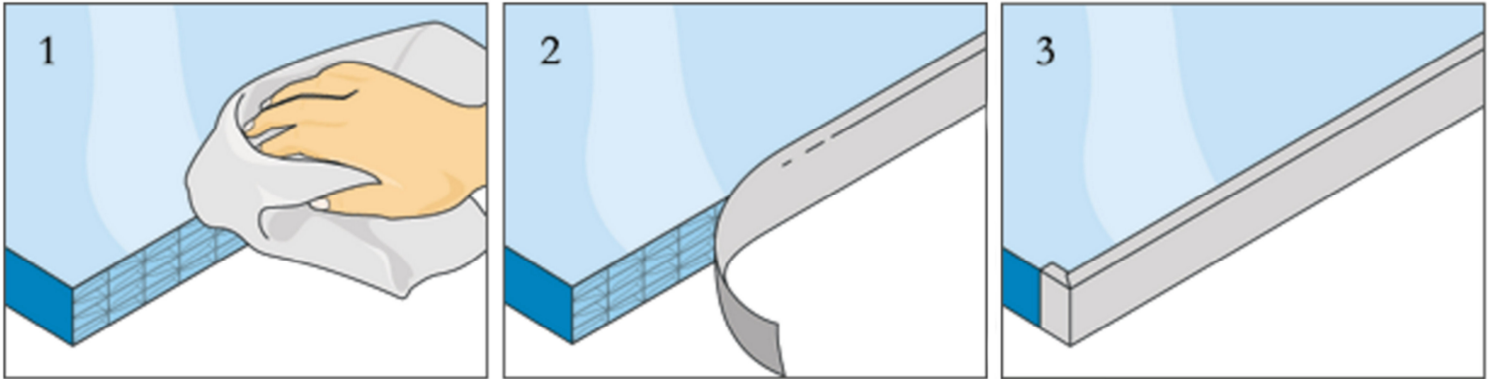




Polycarbonate Panel Sealing Instructions



1. Prepare the polycarbonate panel.

Clean the end of the panel where you will fit the tape. This is a good time to any remove dirt or moisture from the flutes, which are the channels that run the length of the panel. Ensure that the surface is clean and dry before attaching tape.

2. Position tape over the end of the panel.

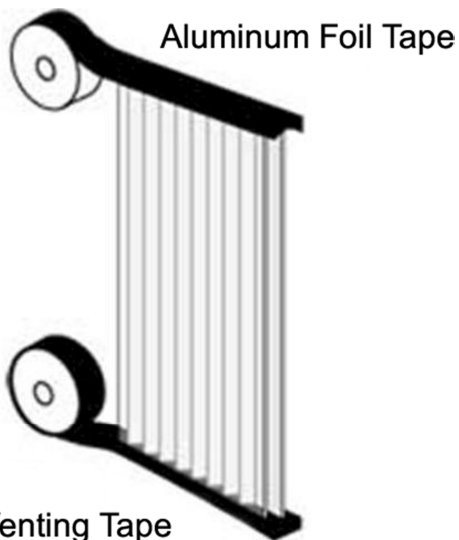
Cut 2 inches longer than the width of the panel. Allow 1 inch extra on each end to wrap around both corners. Stick the pre-cut tape to the end of the panel. Center the tape over the flutes so that an equal amount of tape over hangs each side of the panel.

3. Fold tape over panel to secure.

Fold the overhanging strips of tape to the top and bottom face of the panel. Don't worry if the tape is a little longer than your sheet, you can just fold it around the end.

4. Insert panels into greenhouse frame.

The sealed foil tape side should always be at the top, and the vented tape side should always be at the bottom of the panel when installing them into the greenhouse frame.



Recommended Supplies

- Scissors
- Clean rag or cloth
- Light to medium weight work gloves

CAUTION: Panels can have jagged sharp edges that will cut fingers when applying tape. Please use gloves during installation.

White Venting Tape