

Mist Ring Installation Instructions

Part Description	3 Nozzle Kit	4 Nozzle Kit	5 Nozzle Kit
3/8" Tubing	20'	20'	20'
Compression Tee	1	1	1
Water Hose Adapter	1	1	1
Zip Ties	4	4	4
Misting Tees	3	4	5
Mist Nozzles	3	4	5

Mister Placement

Misters work best when placed in high air flow areas like in front of a circulation fan or intake area for an exhaust fan system. This maximizes water evaporation which is how the air is cooled and minimizes water buildup in the area.



Mist Ring Sizing

Take the tubing and form a circle roughly 2" smaller on all sides than the fan guard or intake opening the mist ring will be mounted to. This will allow for expansion when the tees are added. Cut the tubing with a razor or knife. Then measure the length of the tubing being used for the ring, and divide the number by 4 for the 3 nozzle kit, 5 for the 4 nozzle kit, or 6 for the 5 nozzle kit. This will give you the measurement to cut the pipe into equal lengths for each misting tee and the compression tee.

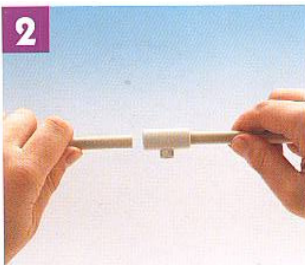
Example: The total tubing length for the ring is 24" and you have the 3 nozzle kit. Cut the 24" tubing into four 6" sections.

Installing the Mist Ring



1 Push and twist the long section of tubing into the water hose adapter about 1". Then pull on the tubing to make sure it is snug, and attach it to a faucet or water hose. The screen in the adapter should be curved away from the tubing inside.

NOTE: Do not insert mist nozzles until after step 3 below.



2 Push and twist the cut tubing lengths into the misting tees about 1/2". Install the compression tee to complete the circle and connect to the tubing from the water source. When all connectors have been installed into the tubing, fasten them to the fan or intake with the included zip ties. For the intake shown in the picture above, we attached a wire to the top side mount holes and secured the mist ring to the center of the wire.



3 When you are done installing the mist ring, turn on the water to flush out the system BEFORE installing the mist nozzles.



NOTE: It is highly recommended that our fine water filter or a similar 5 micron mineral filter be used to minimize nozzle clogging from small debris and/or mineral buildup.