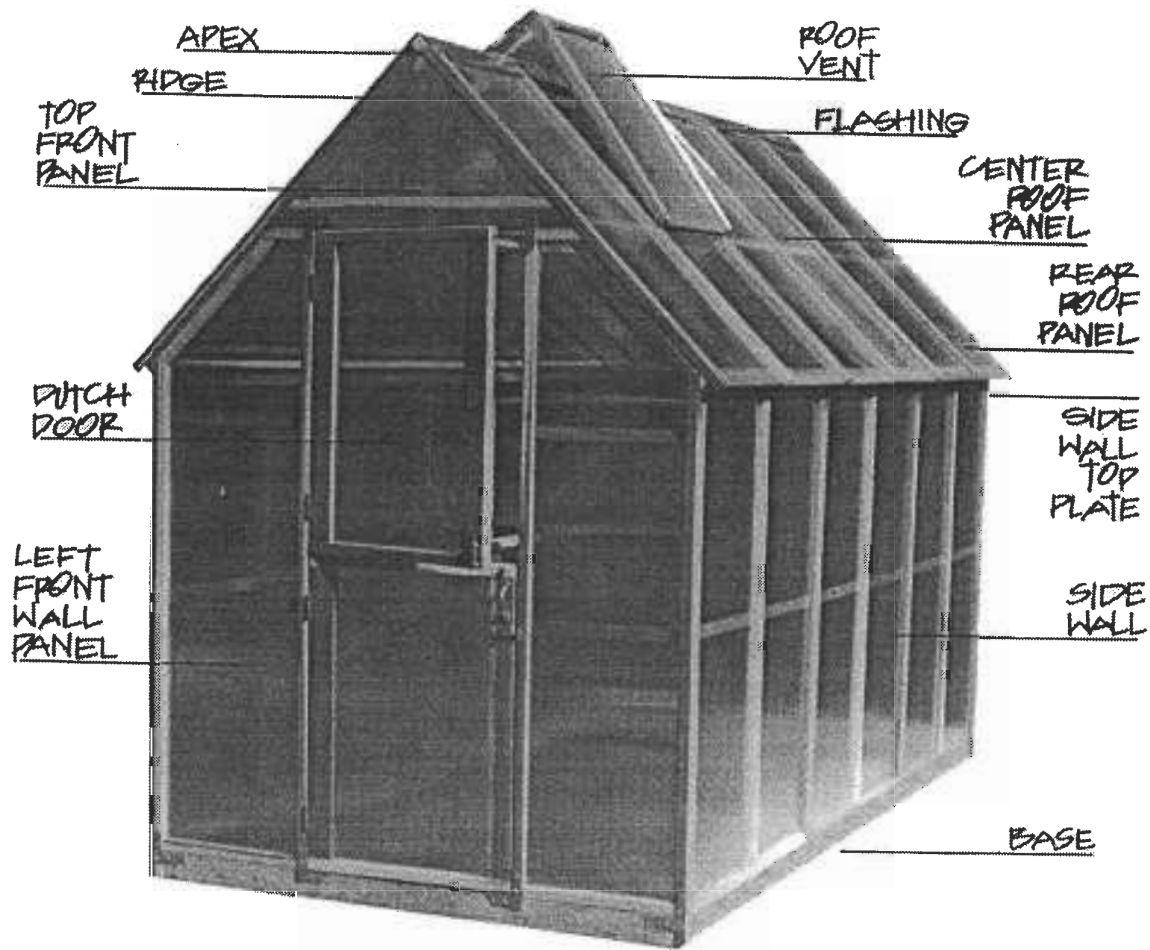




Sunshine GardenHouse

GardenHouse Assembly Instructions

GKP612 Model



BASE VENT, COLLAR TIE, BACK VENT PANEL
AND WIND STOPS NOT VISIBLE



Sunshine GardenHouse

GardenHouse Assembly Instructions

GKP612 Model

A 6' x 12' level work space is needed so the GardenHouse will be squarely-built and the panels will join tightly.

The Standard Building Code state that "a greenhouse with wood frame construction shall be located not less than 5 feet from an adjoining structure or property line" (Section 502, Greenhouses). Your local building code may vary, so check with local building officials.

All major components of the kit are panelized so that you and a helper can assemble the GardenHouse in a few hours. A second person is essential to position the panels.

Tools Required:

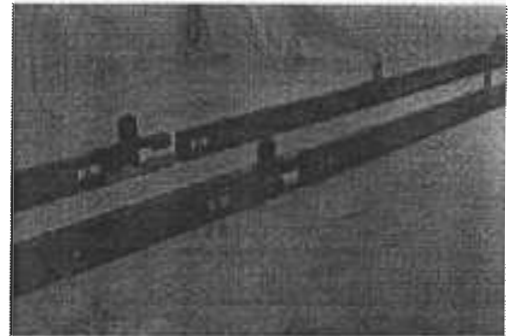
- * Screw gun or variable speed drill with Phillips drive bit. All screws are supplied.
- * 6 foot stepladder.
- * 16 foot tape measure.
- * Safety goggles.
- * Gloves.
- * Optional: 5 tubes (10.1 oz. each) of silicone-based clear caulk. Use this to seal joints, to provide additional protection against wind-driven rain or very cold climates. This type of caulk adheres well to redwood and the glazing panels.

Always wear the appropriate safety equipment, and follow the manufacturer's instructions when using power tools.

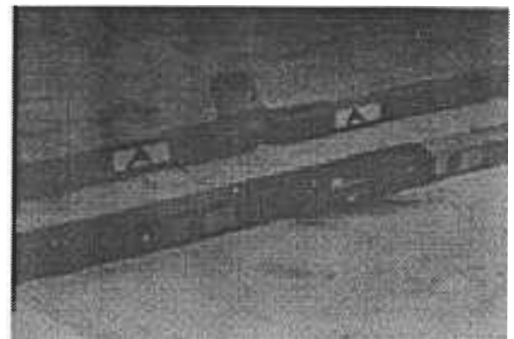
Anchoring

Anchor the GardenHouse to the ground at each corner. If the site is in a windy area, we recommend embedding stakes into poured concrete. If you're anchoring the GardenHouse to a concrete slab or through wood, purchase anchors based on your particular site conditions from your local building products retailer.

1 12 Foot Lengths



Attach **side base** parts using 1-1/4" screws. Match parts "A" together and parts "B" together.



Attach **sidewall top plate** parts using 1-1/4" screws. Match parts "A" and parts "B".

Attach **ridge** parts using 1-1/4" screws. Match parts "A" together with joining connector on the bottom of the **ridge**.



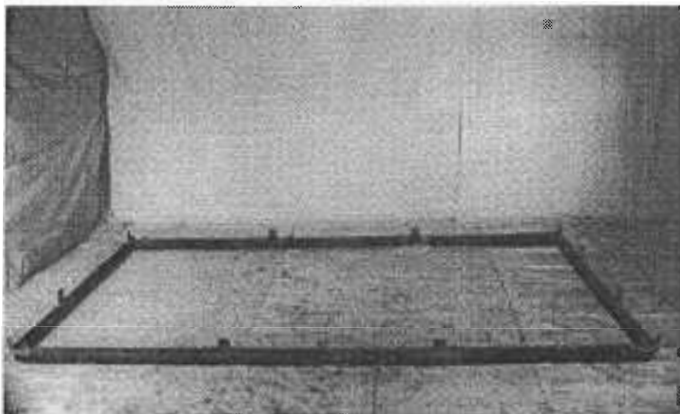
Sunshine GardenHouse

GardenHouse Assembly Instructions

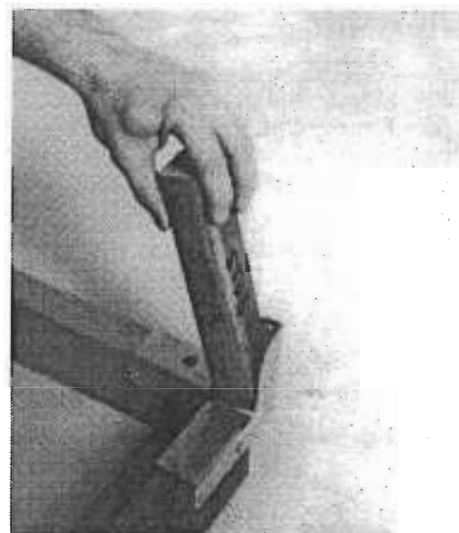
GKP612 Model



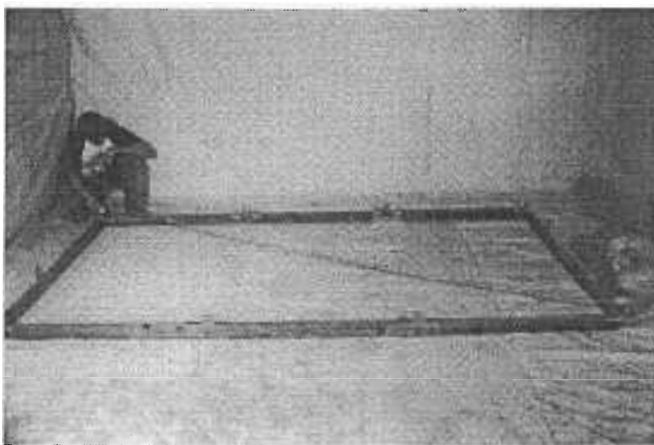
2 Base



Use 1-1/4" screws to assemble the two **side wall bases**, **front wall base** and **back wall base**. The front door will eventually be positioned over the front wall base. *All part labels face outside on the base.*



Use the **stub block** when installing each corner connector so that adequate corner space is left for inserting corner posts.



Check that the **base** is square by measuring diagonally across from corner to corner on both sides. The measurements should be within 1/2" of each other. If more than 1" difference exists, reposition the base members and use the stub block as you tighten and square the corners.

3 Back Wall

Place the two **back wall panels** on the back wall base plate with panel connectors facing inside. Slide the corner posts into their corners.



Drive screws into untaped holes only. Some holes are pre-taped and do not require filling. Fasten back wall panels to back base plate with 1-1/4" screws at corners and vent jamb.



Sunshine GardenHouse

GardenHouse Assembly Instructions

GKP612 Model

4 Front Wall

Place **front wall panels** on the front wall base with panel connectors facing inside. Door is on the left hand panel, viewed from the outside. *Drive screws into untaped holes only.* Insert the corner posts into **their corners.**

Fasten **front wall panels** to **front base plate** and **door jamb** with 1-1/4" screws.



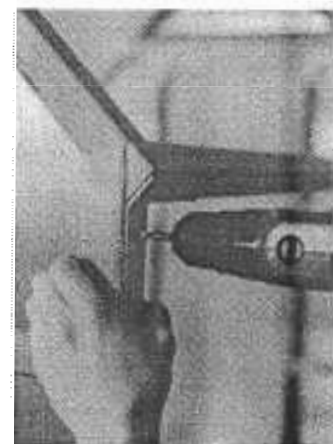
5 Top Back and Front Panels

Position triangular **top back** and **front panels** with ridge connectors facing in. Ensure that roof line is continuous. Fasten with 1-1/4" screws.



6 Side Wall Top Plates

Using 1-1/4" screws, attach **side wall top plates** between front wall and back wall. Drive screws into untaped holes only.



Closeup of connection

Sunshine GardenHouse

GardenHouse Assembly Instructions

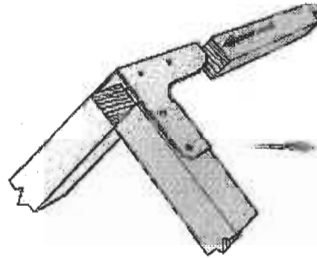
GKP612 Model



7 Roof Ridge

Slip the **roof ridge** into the connector between front and back walls. *The roof ridge has one centered connector and another connector nearest to the front wall.* Drive 3/4" screws into untaped holes only.

Detail of connection



8 Back Vent Panel



Slide **back vent panel** snugly up to position so that vent swings freely at the base. Fasten top end using one 2-1/2" screw through the pre-drilled hole.



Fasten sides with four 2-1/2" screws through the pre-drilled holes.



Sunshine GardenHouse

GardenHouse Assembly Instructions

GKP612 Model

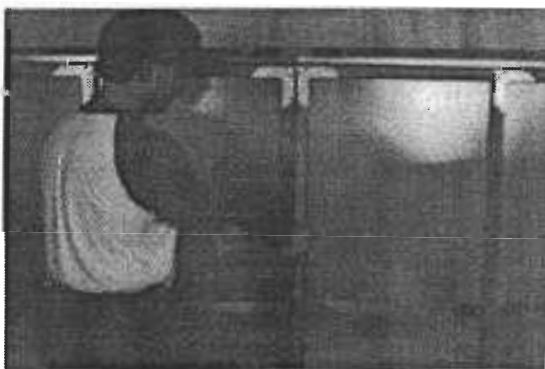
9 Side Walls



All **side wall panels** are identical. Position a side wall with connectors facing inside and metal angle on top.



Drive 2-1/2" screws into two pre-drilled holes at corner. Maintain flush corners. Drive 1-1/4" screws through connectors on outside, lifting any sag from top plate.



Position the second **sidewall panel** at the edge of the first panel.

Drive 2-1/2" screws halfway into two pre-drilled holes along this joint.

Position a third panel, driving 2-1/2" screws halfway into two pre-drilled holes at corner.



Press second and third panels into alignment with base. Use four 2-1/2" screws to attach through pre-drilled holes along joint. Finish driving "halfway" screws in completely.

Sunshine GardenHouse

GardenHouse Assembly Instructions

GKP612 Model



Side Walls continued

Fasten center connectors on outside of walls with 1-1/4" screws. Repeat this for the other sidewall panels.



10 Roof

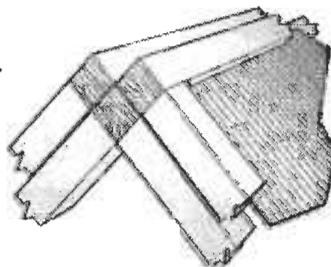


Roof panels are not interchangeable. Labels indicate location when the viewer is facing the front door from the outside. Measure and mark on outside top of sidewall plate 48" from front wall.

Starting with **center roof panels**, slide each panel into roof ridge connector. Fasten to connector with 3/4" screws. Align roof panel with the 48" mark on the sidewall top plate. Use seven 2-1/2" screws through pre-drilled holes to attach each rear panel starting with the hole nearest the mark.

Closeup of connection.

Align the **rear roof panels** with the **center panels** and attach using four 2-1/2" screws through pre-drilled holes on the inside of panels to join **center and rear panels**. Finish attaching **rear panels** from outside using seven 2-1/2" screws through pre-drilled holes.





Sunshine GardenHouse

GardenHouse Assembly Instructions

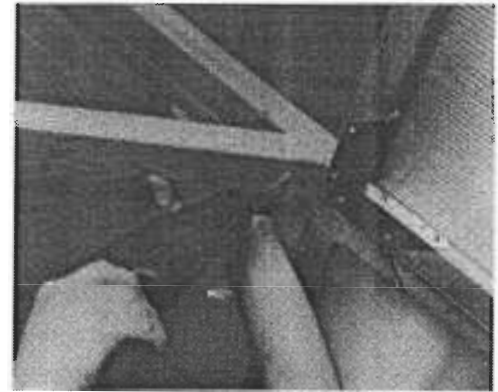
GKP612 Model

Roof continued



Attach **front roof panels** in the same manner as rear panels.

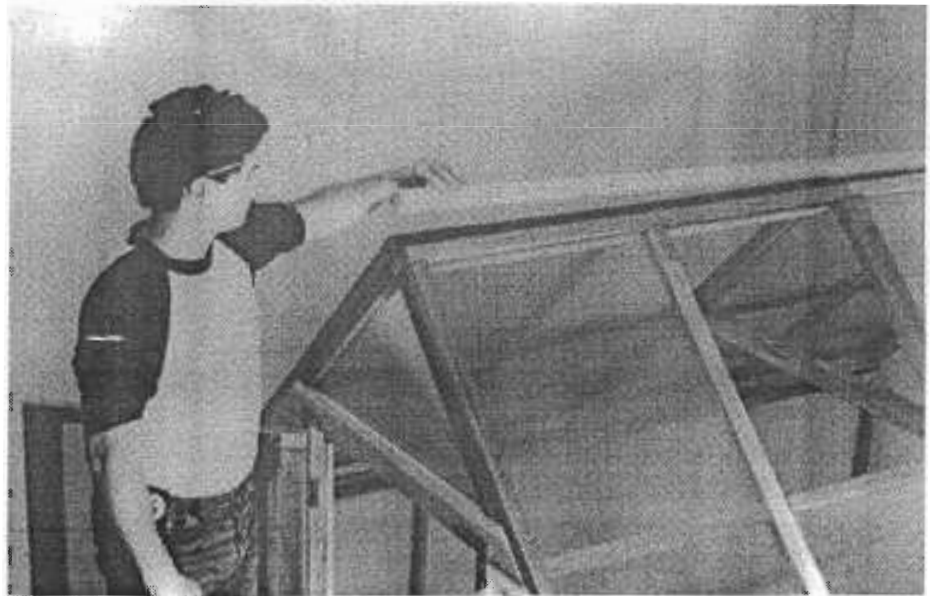
11 Collar Tie



Position the **collar ties** at the roof panel joints on the inside of the GardenHouse. Fasten with 2-1/2" screws through four pre-drilled holes.

12 Apex

Rest 8 foot and 4 foot 2x2 **apexes** into the "V" at the top of the GardenHouse. Attachment will be made after flashing.



Sunshine GardenHouse

GardenHouse Assembly Instructions

GKP612 Model



Apex continued

Cover apex board with three pieces of metal flashing overlapping approximately 2". Attach through pre-drilled holes with 1-1/4" screws. This will fasten both the flashing and apex.



13Roof Vent

Position **roof vent parts** inserting glazing into groove with hinges on inside. Fill connector holes with 3/4" screws.

Using 1-1/4" screws, attach supplied connectors to reinforce vent. The protective card may now be removed.





Sunshine GardenHouse

GardenHouse Assembly Instructions

GKP612 Model

Roof Vent continued



Cut and attach self-adhesive **insulating tape** to the inside of vent perimeter.

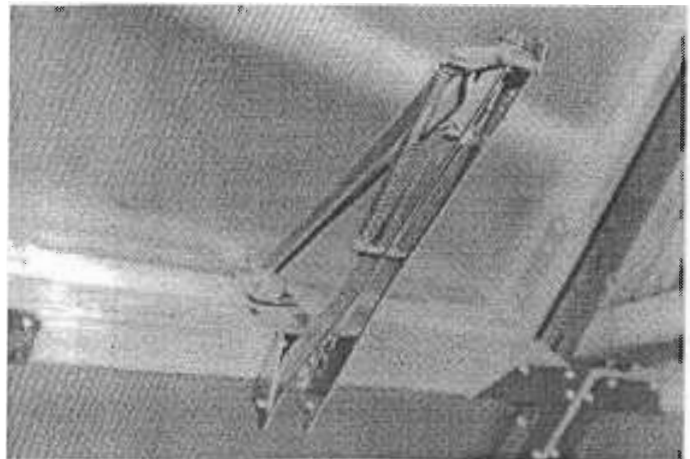


Rest **roof vent** over ridge. Align shim under hinge, and attach using 1-1/4" screws through the hinges.

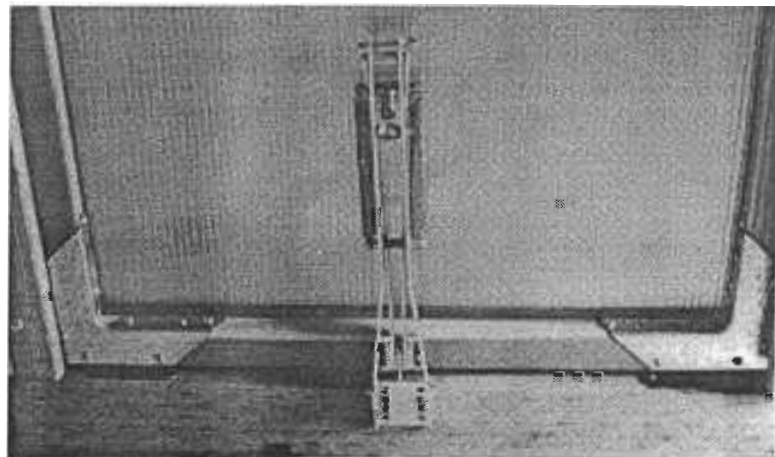
14 Automatic Vent Operators

Center the **vent operators** on the vent frames. Note the different angles of attachment for the roof and base operators. Attach with 1-1/4" screws. Refrigerating the black cylinder for about an hour before installation allows you to compress the piston for easier attachment.

Roof Vent



Base Vent



Sunshine GardenHouse

GardenHouse Assembly Instructions

GKP612 Model

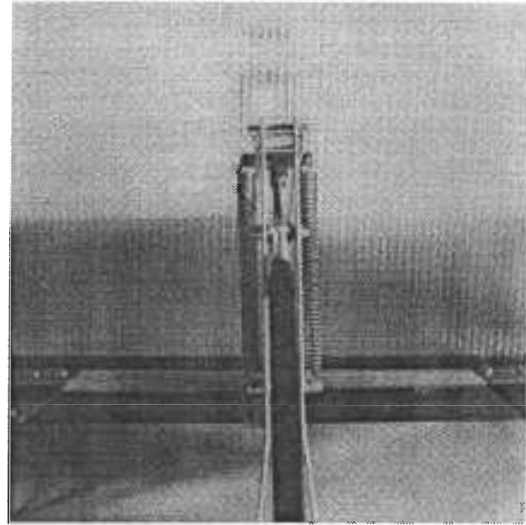


Automatic Vent Operators continued

Place the piston through the threaded bolt and into the sleeve with the sleeve pointing down. Insert pin in outermost holes of sleeve and piston.

To detach automatic operators for manual operation or to prevent opening, simply squeeze the side bars together and release them from the bracket.

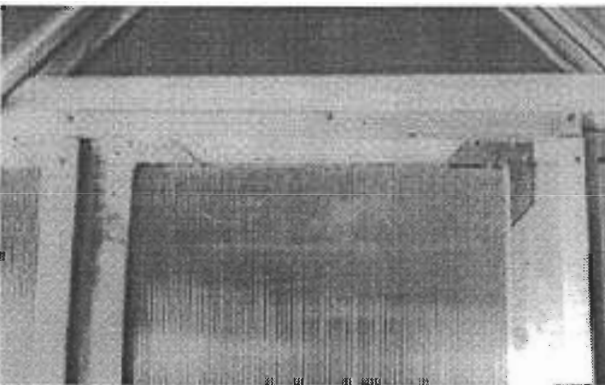
Restraining vents from opening when operators are attached will damage the operator and/or frame.



15 Wind Stops

To seal around door, extend wood **wind stops** 3/4" into the opening. Using 1-1/4" screws, center and attach wind stop over the top of door jamb, then butt the side wind stops to it.

To seal around base vent, attach clear vinyl **wind stops** from outside of GardenHouse. Using a staple gun if available, or the upholstery tacks provided, attach wind stop to sides of the base vent frame, extending 3/4" beyond vent. Then center and attach to GardenHouse frame overlapping the top of the vent 3/4".



Wind stop over door jamb

Note: To prevent small animals from entering your GardenHouse through the base vent, install wire mesh, chicken wire, netting or open weave hardware cloth (1/4" minimum opening) on the inside of the frame (not included). Standard window screen material restricts circulating air.



Wind stop over base vent



Sunshine GardenHouse

GardenHouse Assembly Instructions

GKP612 Model

Congratulations!

You've completed your Sunshine GardenHouse and will get years of useful enjoyment from it. Please send us your owner registration form so that we can get in touch with you in the future. We are very interested in your GardenHouse experience. A shade cloth kit, a comprehensive new book for greenhouse gardeners, and a growing choice of GardenHouse accessories are available.

Optional 12 Foot Bench Kit

Get the optimum use from your GardenHouse with this specially designed 21" deep bench kit. Made of clear-grade, dried redwood to match your GardenHouse, it attaches to the house frame. Attach one bench kit on each side for a 2' 6" aisle.

To purchase bench kits, see your local GardenHouse dealer

